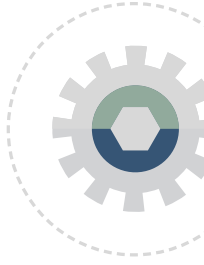




ASG-TMON® PERFORMANCE ANALYZER FOR Z/OS

For a complete view into the performance of your mainframes, their peripherals, and the level of resources being used



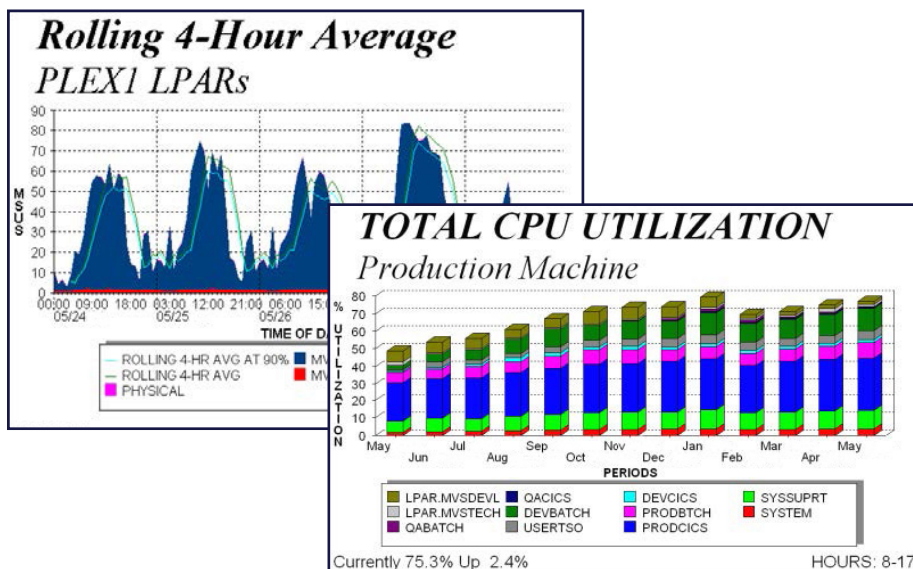
OVERVIEW

With ASG-TMON® for z/OS allows you to understand your mainframe from the inside out. You can discover LPARS, Service Classes, Report Classes, I/O Subsystems and more; view graphical representations of all discovered metrics; perform simulation modeling of the LPAR environment to determine optimal LPAR configuration; and look back upon historical trend analysis of resource usage over all key resources, including MSU 4 hour rolling average, Goal Mode workloads and DASD I/O controllers and devices.

With ASG-TMON® PA for z/OS, you can monitor workloads and historical trends for z/OS LPARs, and CPU output forecasts to effectively manage capacity planning, and determine how long you will be able to stay on hardware before thresholds are violated. It will also anticipate business impact to service levels caused by new applications, worst-case spikes, and unique IT growth initiatives designed to fuel company success - giving you the ability to manage, control, and effectively leverage expensive mainframe MIPS capacity.”

ASG TMON® PA supports your choice of data sources. IBM SMF data and/or ASG-TMON data. ASG-TMON® data provides near real time collection vs. SMF log batch processing.

Combined with ASG-TMON® PA modules for VMware, UNIX, Linux, and Windows, ASG-TMON® PA for z/OS delivers an end-to-end systems management solution that enables cross-platform modeling, management, and optimization of physical and virtual environments for total visibility.

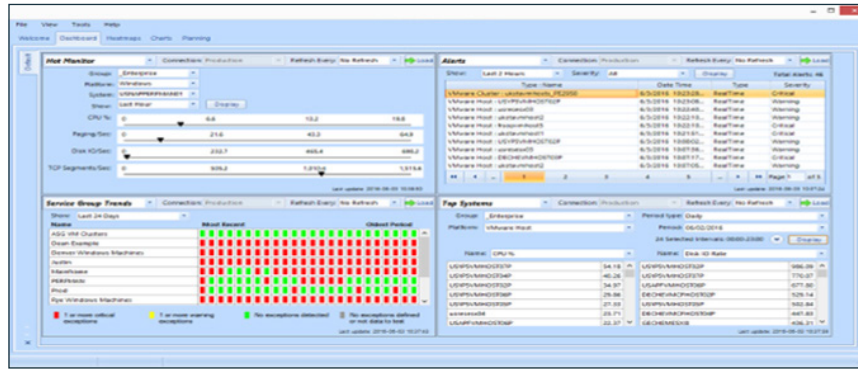


BENEFITS

- Make better decisions based on in-depth server workload, DASD space, I/O subsystem, and goal mode analysis
- Utilize in-depth trending and forecasting for DB2, CICS TS, z/OS Modeling, and Business Unit Analysis to eliminate risk and plan for future utilization needs
- Quickly measure and assess the impact of Capacity-On-Demand and its resulting effect on workloads
- Perform enterprise-wide management regardless of platform or geographic location
- Realize fast ROI via hardware, software licensing, and operational cost savings
- Utilize fully automated analysis, reporting, and integrated web publishing for total control and visibility
- Manage multiple systems, comprising thousands of servers and workstations for a single point of control
- Accelerate ROI with the fastest deployment and time-to-value in the industry
- Centralize control of your entire IT infrastructure to dramatically reduce administrative overhead and eliminate human error

ASG-TMON® PA PORTAL - AN EXECUTIVE DASHBOARD:

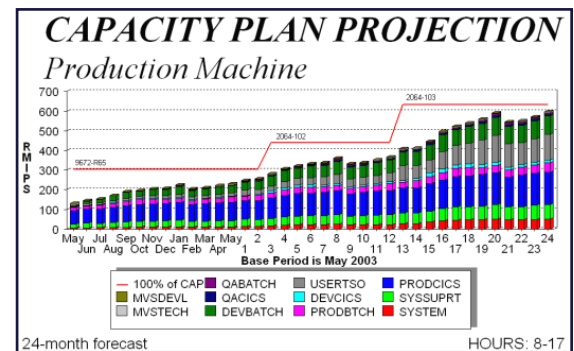
ASG-TMON® PA Portal provides cross-platform visibility to the entire enterprise IT infrastructure through a single, easy-to-use interface.



ASG-TMON® PA ANALYST:

ASG-TMON® PA for z/OS includes ASG-TMON® PA Analyst, a powerful, Microsoft Windows-based analysis tool. ASG-TMON® PA Analyst is an easy to use desktop solution that simplifies access to charts and tools using an intuitive Navigator and Data Selector. Here is a sampling of just a few of ASG-TMON® PA Analyst's features:

- Chart Customization is simple using ASG-TMON® PA's SmartChart point and click feature. Change the charts to reflect your needs. Add notations, change the colors, styles, etc.
- Powerful Scripting allows reporting and analysis to be automated, eliminating expense and tedium.
- Web-based reporting makes it easy to put reports on your intranet or extranet for on-demand access.
- Data Organization - Keep your data organized by system and period to efficiently handle months, weeks, and days.
- Platform Integration - ASG-TMON® PA Analyst integrates all the platforms right in the same analysis tool. Learn it for one platform and you learn it for all platforms.
- Desktop Integration - Results can be saved, printed or exported to spreadsheet or presentation packages with point and click ease.



ASG-TMON® PA PORTAL BENEFITS

- Gain insight into your entire infrastructure via the web-based dashboard
- Produce sophisticated role-based reports and view resources by service, line of business, location, application, and more
- Quickly identify current and future problem areas
- Capture a snapshot of hundreds or thousands of multi-platform systems
- Compare and analyze key indicators across platforms to monitor performance

ASG Technologies brings peace of mind to every enterprise with information access, management and control for our customers. These solutions empower businesses to enhance workforce productivity, gain an accurate and timely understanding of the information that underpins business decisions and address compliance needs with improved visibility of cross-platform data from legacy to leading edge environments. ASG to optimize their IT investments. ASG is a global provider of technology solutions with more than 1,000 people supporting more than 4,000 midmarket and enterprise customers around the world. For more information, visit www.asg.com.