



## ASG-TMON® PERFORMANCE ANALYZER FOR APP SERVERS

A COMPLETE J2EE APPLICATION SERVER PERFORMANCE MANAGEMENT SOLUTION FOR ANY J2EE 1.4+ COMPLIANT APPLICATION SERVERS

### ASG-TMON® PA FOR APP SERVERS IS A SOPHISTICATED YET EASY-TO-USE SOLUTION

for enterprises seeking to bring clarity to the management complexity of their J2EE Application Servers. ASG-TMON® PA for App Servers provides the information and analysis needed to provide highly performing and scalable applications to your business, by matching the long-term demands placed on the server infrastructure to your business cycles. It supports any J2EE 1.4 compliant application servers.

### INTRODUCTION

ASG-TMON® PA provides an holistic view of performance and capacity planning for your entire enterprise with consistent UI, graphing and reporting. It provides proactive and reactive capabilities for enterprise resource management. Your IT specialists can work together across platforms using the same tool. It encompasses IBM zSystems and distributed platform operating systems, transaction managers, databases and application servers providing you with a single point solution to consistently address your performance management and reporting needs.

### OVERVIEW

ASG-TMON® PA for App Servers is an agent based solution, integrated into the robust ASG-TMON® PA Analyst and Client UI, and is also available from the in the ASG-TMON® PA Portal web browser. This allows you to access the chart and reporting capabilities to view summarized performance data, as well as the real-time data, alerts, and high-level system overviews available in Portal. Like all the supported environments, the application server collector is fully compatible with all of the feature-rich capabilities of ASG-TMON® PA.

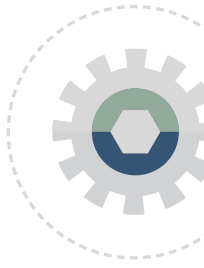
The App Server charts and tools allow you to interactively view charts of summarized performance metrics for the application server(s) that you are monitoring. They provide an enterprise view and a server instance view for more specific details.

ASG-TMON® PA Portal provides a web browser view/list of all of the application servers being monitored, and allows you to view specific metrics for a single system or for multiple systems.

In addition, it allows you to export the results into PDF, Excel, CSV, or Microsoft Word files for externalization and use with other 3rd party tools.

### MAIN OBJECTIVES

- Provides insight to critical resources and information/metrics impacting your J2EE application servers performance. Compatible with any J2EE 1.4+ app servers including: IBM WebSphere, Oracle WebLogic, Apache Tomcat, GlassFish, JBoss...
- Sessions
- Cache
- Memory
- Locks
- Objects
- Threads
- Global Transactions
- Provides real-time and long term trending views and analysis.
- Real-time alerts on issues
- Cross platform analysis and collaboration to improve Mean Time To Resolution (MTTR)



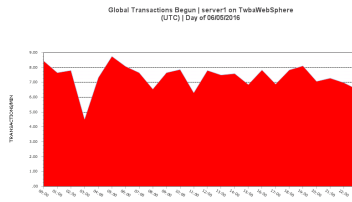
**PORTAL DISPLAY**

Provides seven sets of data at the summary level:

System	Line	Address	Time Since Transaction	Requests Allowed	Requests Allowed (per-sec)	Requests Allowed (per-sec)	Requests Allowed (per-sec)	Requests Allowed (per-sec)	Requests Allowed (per-sec)	Requests Allowed (per-sec)	Requests Allowed (per-sec)
server1 on TwbaWebSphere	10	1	4500	2000	0	0	0	0	0	0	0
server1 on TwbaWebSphere	10	1	4500	2000	0	0	0	0	0	0	0

*Provides insight into critical resources*

Chart: Global Transactions Begin | Show Chart + Data | All Intervals | [24 Selected Intervals: 0000-2300] | Go Print



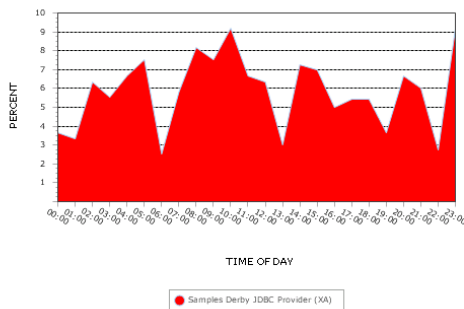
*Analyze transaction volume*

**WHAT ARE THE BENEFITS?**

- High scalability, allows centralized capacity and performance management of application servers
- The ASG-TMON® PA solution suite provides cross-platform visibility to the entire IT enterprise infrastructure through a single, easy-to-use interface for all ASG-TMON® PA supported platforms:
  - z/OS, zLINUX, Linux, Windows, UNIX, VMWare
  - CICS TS, DB2 DB, J2EE App Servers, Oracle DB, Sybase DB, SQL Server DB

**Resource Chart**

Pool Utilization | server1 on TwbaWebSphere (UTC) | Day of 06/05/2016



close

*Analyze Pool Utilization*

**ALERTS**

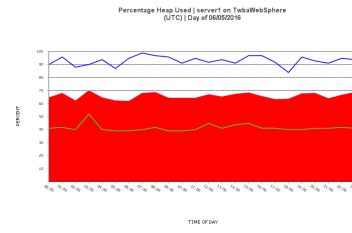
Real-Time alerts can be configured via Portal Administrator:

Defined Exceptions:	Platform:	App Server:
High Heap Utilization	PeerT...	Technical
High J2C Utilization	PeerT...	Technical
High J2EC Pool Utilization	PeerT...	Technical
High Thread Pool Utilization	PeerT...	Technical

*Real time alerts on critical resources*

General | Web App Containers | J2C Connector Pools | Thread Pools

Chart: Percentage Heap Used | Show Chart + Data | All Intervals | [24 Selected Intervals: 0000-2300] | Go Print



*Analyze critical Heap usage*

ASG Technologies Group, Inc. provides global organizations with a modern approach to Digital Transformation to succeed in the Information Economy. ASG is the only solutions provider for both Information Management and IT Systems. ASG's Information Management solutions enable companies to find, understand, govern and deliver information of any kind, from any source -- whether structured or unstructured -- through its lifecycle from capture to analysis to consumption. The IT Systems Management solutions empower companies to support traditional and modern digital initiatives, operate their IT infrastructure more efficiently and effectively and reduce the cost of managing and running their internal IT systems landscape. ASG is proud to serve more than 3,000 customers worldwide in 60 countries and in top vertical markets including Healthcare, Financial Services, Insurance and Government. For more information, visit [ASG.com](http://ASG.com) or connect with us on [LinkedIn](#), [Twitter](#) and [Facebook](#).